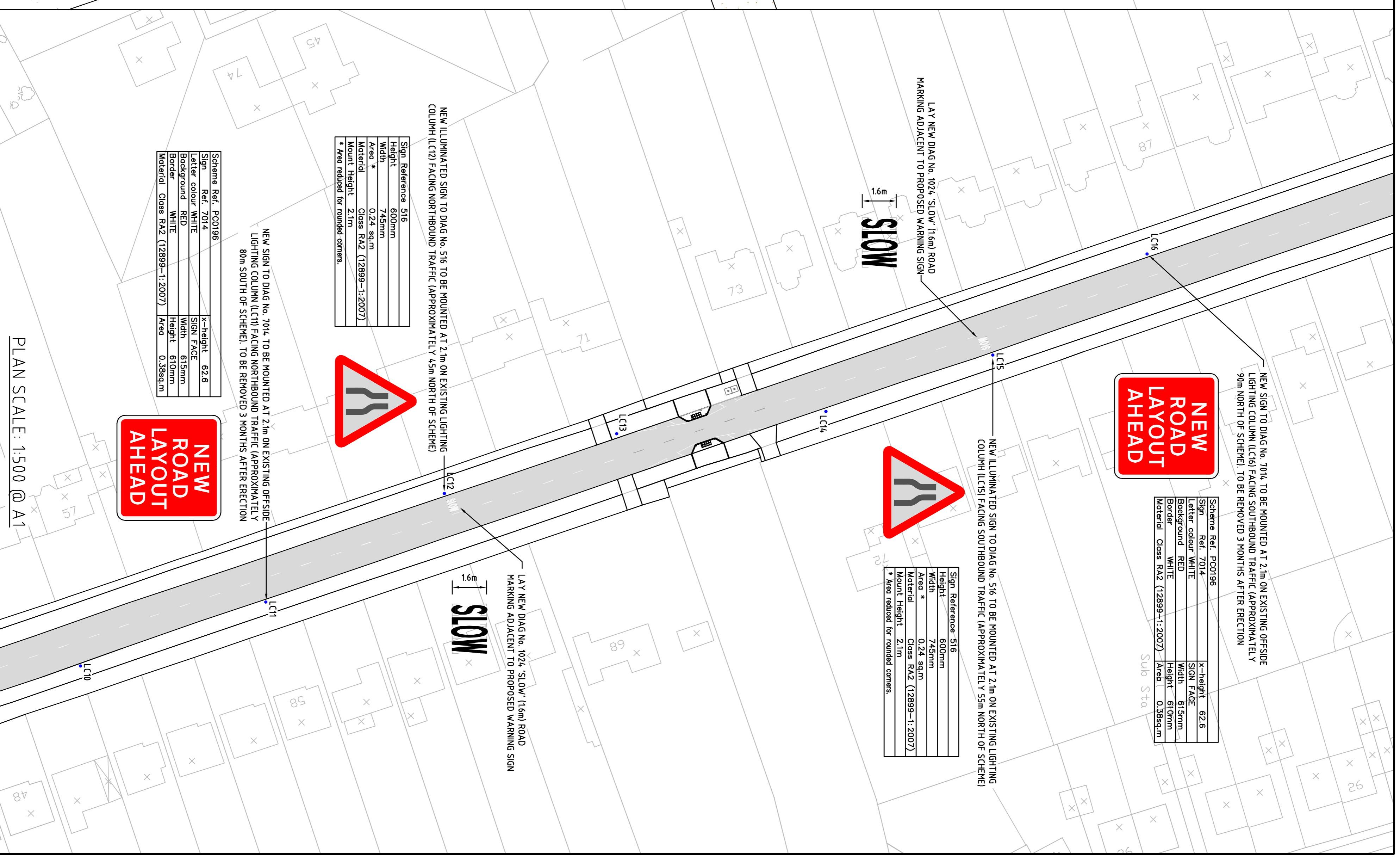
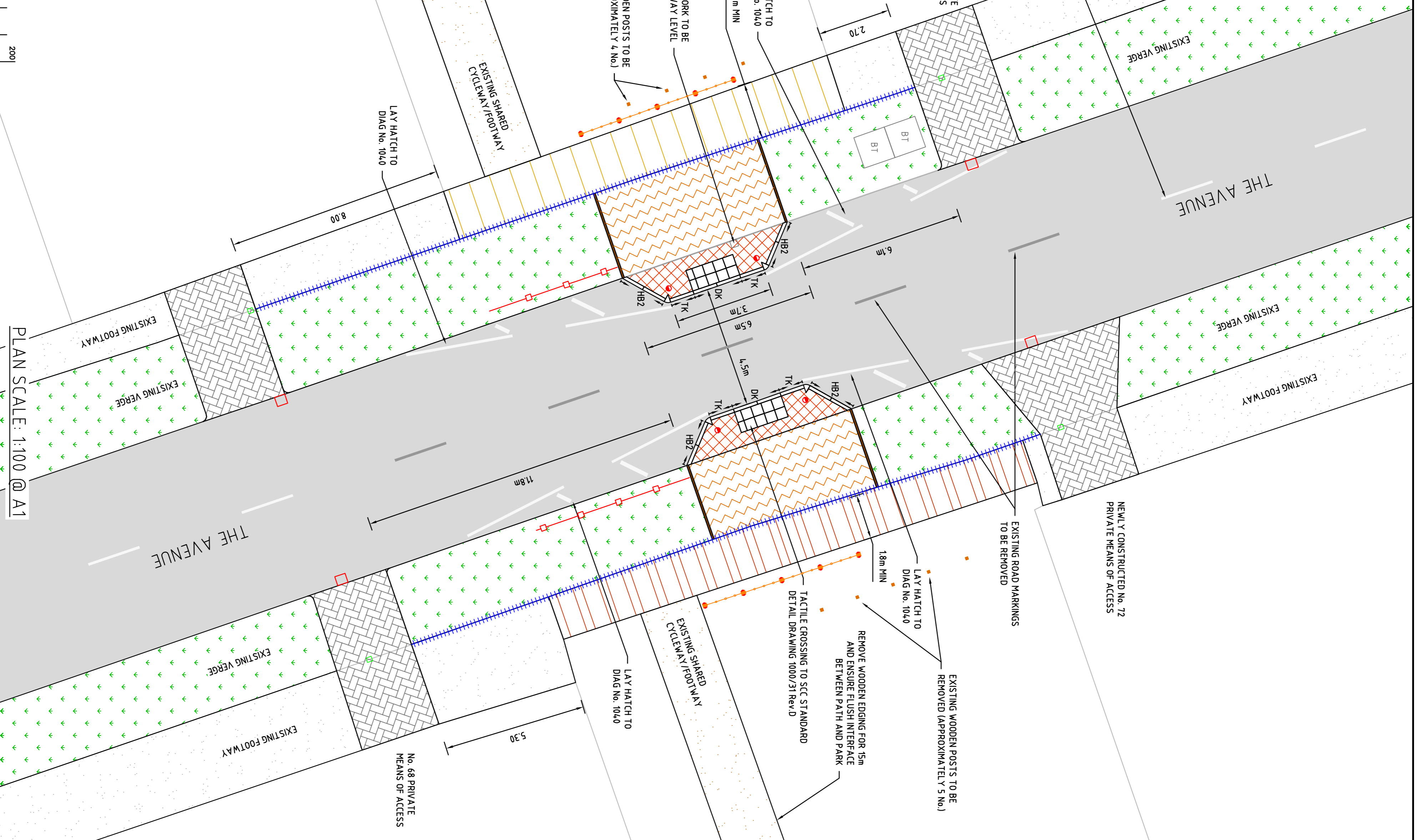
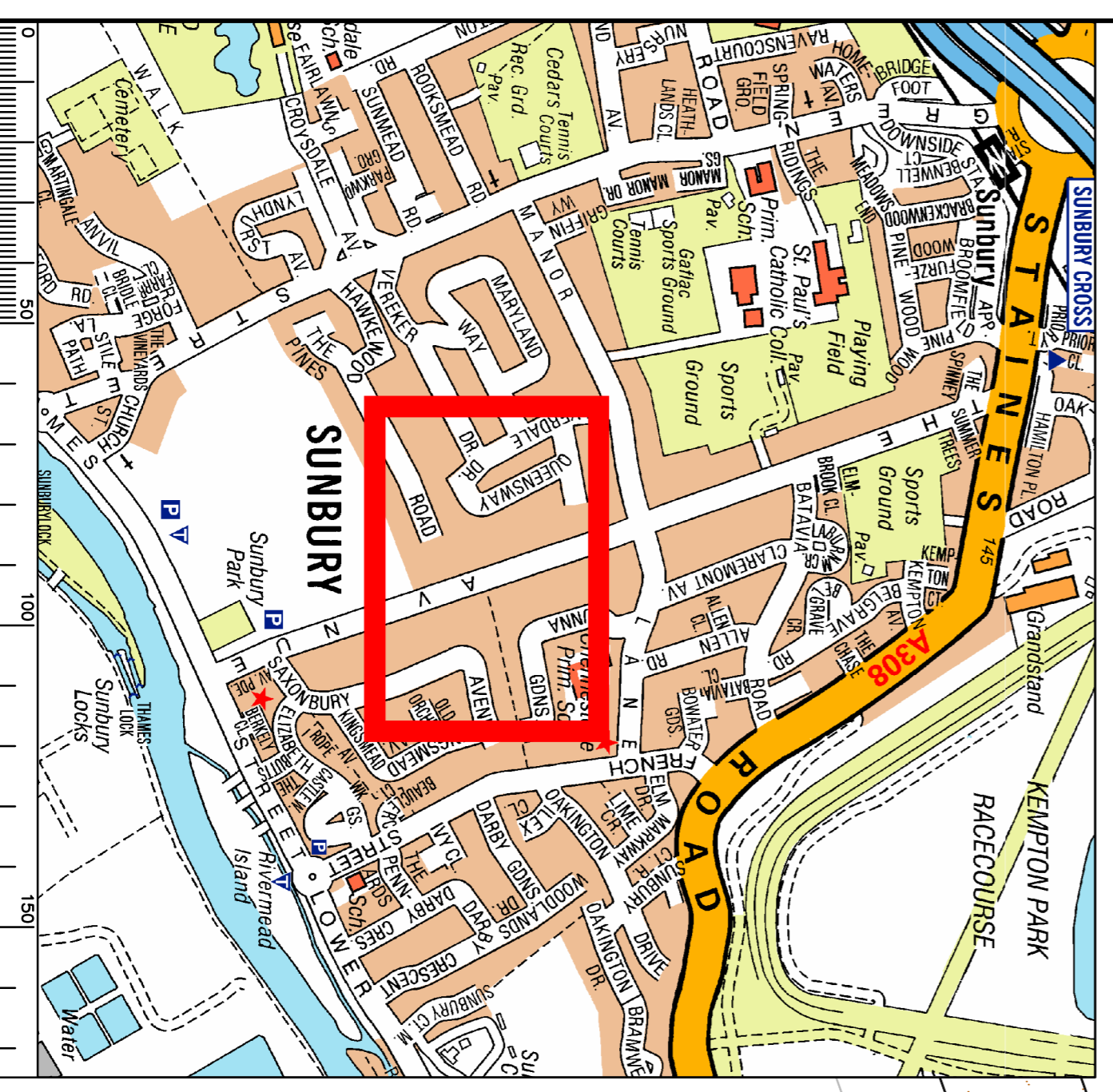


- KEY**
- DISHED CHANNEL TO BE REMOVED AND REPLACED WITH FLAT CHANNEL BLOCK TO SCC STANDARD DETAIL DRAWING 1000/01 Rev B TYPE CS2 - TOTAL LENGTH 55m
 - EXISTING CARRIAGEWAY GULLIES - TO BE CLEANED OUT AND RETAINED
 - EXISTING FOOTWAY CHANNEL INLET - TO BE CLEANED OUT AND RETAINED
 - NEW TINDER EDGING TO SCC STANDARD DETAIL DRAWING 1000/08 Rev C TYPE M - TOTAL LENGTH 14m
 - PROPOSED FOOTWAY BUILDOUT TO SCC STANDARD DETAIL DRAWING 1000/35 Rev A - TOTAL AREA 10m²
 - AREA OF PLANTING REPLACED WITH FOOTWAY CONSTRUCTION TO SCC STANDARD DETAIL DRAWING 1000/09 Rev H - TOTAL AREA 40m²
 - AREA OF OVERLAY OF EXISTING FOOTWAY TO BE INTO NEW CONSTRUCTION LEVELS - TOTAL AREA 30m²
 - AREA OF SLABS TO BE REMOVED AND REPLACED WITH FOOTWAY CONSTRUCTION TO SCC STANDARD DETAIL DRAWING 1000/09 Rev H - TOTAL AREA 32m²
 - INSTALL L40 REFLECTIVE GLASSON VICTORY BOLLARDS OR SIMILAR WITH TYPE A BANDING - 450mm OFFSET FROM KERB FACE
 - INSTALL NEW PEDESTRIAN GUARDRAIL PANEL TYPE (III) TO SCC STANDARD DETAIL 1000/303 REV D ON SAME LINE AS REMOVED DISUSED CHANNEL - TOTAL LENGTH 11m
 - INITIAL NEW AEGE HIGH FENCING TO SCC STANDARD DETAIL DRAWING E174 450mm OFFSET FROM BACK OF FOOTWAY - TOTAL LENGTH 12m. MOUNT REFLECTIVE DISCS ONTO INDIVIDUAL POSTS - TOTAL No. 20

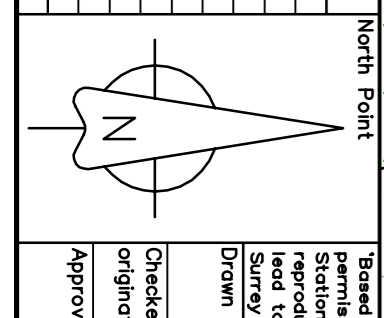
SCHEME LOCATION PLAN



- Notes**
- DRAWING BASED ON OS DATA. ALL WORKS TO BE SET OUT BY AN ENGINEER ON SITE PRIOR TO CONSTRUCTION
 - ELECTRICAL WORKS TO BE CARRIED OUT BY SKANSKA
 - ALL OVERBRANNING FOLIAGE TO BE TRIMMED BACK ON EACH APPROACH PROVIDING IMPROVED VISIBILITY OF CROSSING
 - ENSURE ADEQUATE VERTICAL ALIGNMENT IN LOCATION OF CROSSING ENSURING SURFACE WATER CONTINUES TO DISCHARGE INTO EXISTING GULLIES

Rev

Rev	Description	Drwn	Sig	Date	CHKD	Sig	Date	APPR	Sig	Date
A	WORKS IN RESPONSE TO RSA STAGE 2	SP	SP	01-05-12	JC	JC	01-05-12			
B	PROPERTY ACCESS ADDED / NEW KNEE HIGH FENCING ETC.	SP	SP	10-08-12	JC	JC	10-08-12			



Project

Based upon the Ordnance Survey mapping with the Stationery Office © Crown copyright. Unauthorised reproduction infringes Crown copyright and may be a criminal offence under section 1 of the Copyright, Designs and Patents Act 1988 and section 17 of the Copyright, Designs and Patents Act 2002.	Drawn by	SP	SP	16-02-12	Checked by	JC	JC	16-02-12	Approved by	SP	SP	16-02-12
--	----------	----	----	----------	------------	----	----	----------	-------------	----	----	----------

GENERAL ARRANGEMENT

SUNBURY

THE AVENUE

PLAN SCALE: 1:500 @ A1

SHEET 1 OF 1

SURREY COUNTY COUNCIL

Project No. PC0196
Contract No. PC0196/02
Drawing No. B
Revision No. B
Classification: DRAFT